

'I really enjoyed the challenges of the Queen's Guide Award and felt a great sense of achievement when I completed it.'



The Queen's Guide Award

The Queen's Guide Award is the ultimate award in guiding. To achieve it you have to embark upon a series of challenges which develop your personal skills and give you the opportunity to become more involved in guiding and your community.

Are you...

- 16–25?
- looking for an award that's flexible?
- ready for new experiences?

Read on to find out more...



WE DISCOVER, WE GROW

Girlguiding



The Syllabus

The syllabus for the award consists of five elements.



1 Service in Guiding

AIM: Take an active part in guiding at a variety of levels.

CHALLENGE: Complete all four elements. At least one element should involve working with more than one guiding section.

Element 1: Carry out practical guiding service for a period of 60 hours.

Element 2: Attend a residential guiding event and accept a responsibility that furthers your guiding experience. This element must be a personal challenge for you.

Element 3: Take an active part in the planning of an event that involves the participation of at least two units.

Element 4: Actively participate in a working group or committee run by Girlguiding or your Country or Region, or get involved in an Association issue. For example you could:

- work on a Task and Finish Group
- volunteer for 4CaST
- join your Country or Region Youth Council/Forum
- join the British Youth Council delegation
- take part in a World Association of Girl Guides and Girl Scouts (WAGGGS) seminar
- join the Student Scout and Guide Association (SSAGO) Executive Committee
- attend Innovate.

'I became a lot more involved in guiding in my Region.'



2 Outdoor Challenge

AIM: Develop leadership and teamwork skills in an outdoor environment.

CHALLENGE: Participate in an outdoor challenge and demonstrate leadership skills as well as the ability to be part of a team by completing both elements.

Element 1: Before undertaking the challenge you must:

- have completed the first six modules of The Senior Section Permit (or the first five modules and elements C, E and F of Module 6 of the Camp and Holiday Scheme)
- undertake further training as required to prepare you for the challenge.

Element 2: Participate in an exploration or expedition lasting four days (three nights) accompanied by your peers.

'For my exploration I visited Bath and explored the history and architecture of the city which I presented as a photo book to my assessor.'



3 Personal Skill and Development

AIM: Develop a personal interest or hobby.

CHALLENGE: For a minimum of 60 hours over 12 months, take an existing skill to a new personal level or start a new skill and develop it.

'For my personal skill I started to learn Welsh. I did a year of basic Welsh classes.'



4 Community Action

AIM: Encourage active participation in the world in which we live.

CHALLENGE: Over a 12-month period, undertake two projects on a chosen topic. One of these should be of a practical nature and the other should be research oriented.

Element 1: Your chosen topic must enable you to become involved practically at a local or regional/national level, and allow you to undertake further research to deepen your understanding of the topic at a regional/national and international level.

Element 2: At the end of your 12 months, you should present the findings of your research and an evaluation of the practical project to a group of your choice (these people could have been involved with your project).

'I created a resource on poverty and designed a badge to sell to raise money for the Sangam World Centre.'

5 Residential Experience

AIM: Develop interpersonal and communication skills in a residential setting.

CHALLENGE: Participate in a residential experience run by Girlguiding or by another agency lasting no fewer than three days (two nights) and where the majority of participants are unknown to you.

'I attended my Regional Senior Section camp where I met other Senior Section members from within my Region and enjoyed lots of different activities.'





Frequently Asked Questions

How do I do it?

1. You need a Mentor: choose one or speak to your Leader or The Senior Section Adviser.
2. Have an initial planning meeting with your Mentor to outline your plan and complete the S/QG form, which then gets sent to your Queen's Guide Coordinator. This is your official start date.
3. Get started! Ensure you make your Promise before the end of your second year (if you haven't done so already).
4. Don't forget to get your record book signed each time you finish a challenge. Each project or event can be used only once for an element of your award.
5. Once you've finished all the elements, complete your record book and contact your Queen's Guide Coordinator.
6. When your award is confirmed, attend your presentation and celebrate!

How long will it take?

Doing the Queen's Guide Award will take between one and three years from your

official start date. You must have completed the award by your 26th birthday. You have the option to take a break of up to 12 months. This should be planned at the beginning of the award if possible.

Can projects I'm working on for other awards be used for this award?

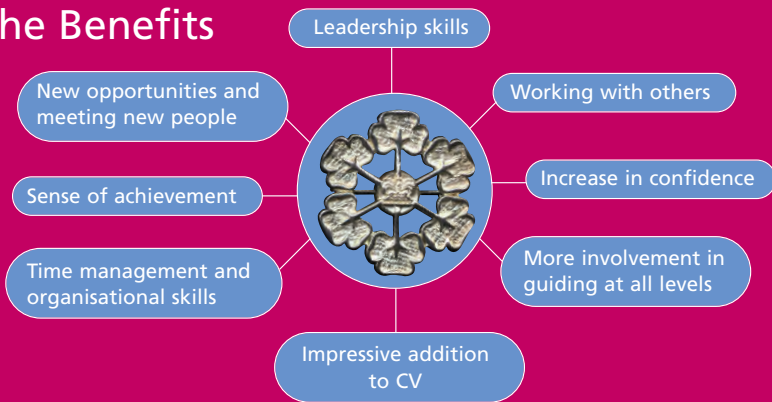
If you are working on DofE, the Young Leader Qualification, Look Wider or your Leadership Qualification, elements of these can be counted towards your Queen's Guide award as long as this is included in your initial plan. Remember that the conditions of both awards should be observed.

How will I be assessed?

Before starting each element you will need to pick someone who can confirm that you have completed the challenge. This person, your Assessor, may be able to give you useful pointers for getting the most out of the particular clause and be able to discuss your progress while you are completing the challenge. Agree your choice of Assessors with both your Mentor and Coordinator.



The Benefits



How can I find out more?

- Look at the information on the The Senior Section CD, which comes with a copy of the Queen's Guide Record Book (£4.95, order code 6042; contact 0161 941 2237 or visit www.girlguidingshop.co.uk).
- Visit the The Senior Section website (you can download the S/QG form from here).
- Talk to your local Leader, Queen's Guide Coordinator, Adviser or Commissioner.
- Ask other local The Senior Section members who are working towards their award, or who have completed it, how they did it!